

# Calma

Design by **Nurus D Lab**



**nurus**

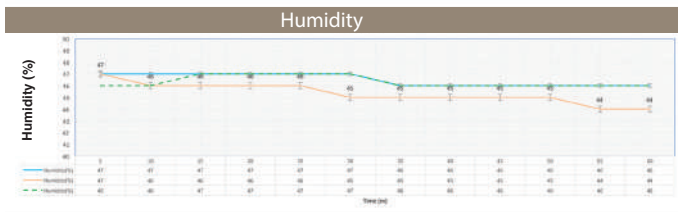
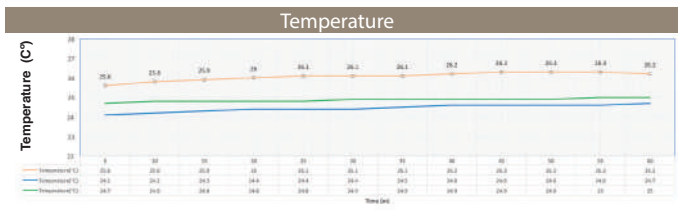
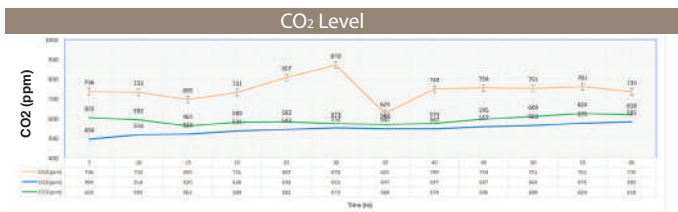


# CALMA S



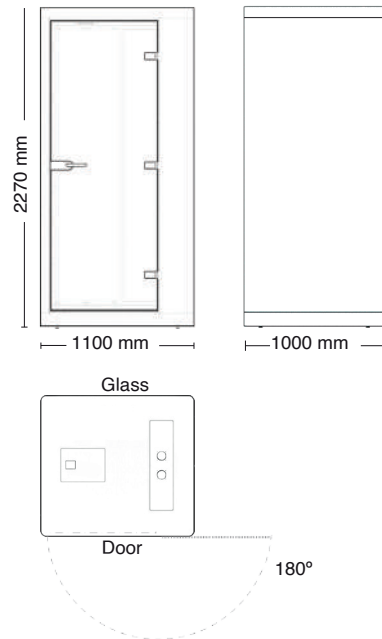
## Air Flow

2-Units Super Silent Fans - 8,6 dB (Acoustical Noise)  
 47,2 liter/s | Total - 170 m3/h



## TEST CIRCUMSTANCES

Tests conducted 60 minutes (in turns of 5 minutes phone talking and 10 minutes in silence) with 1 person. Given data is the average of tests conducted during three days.



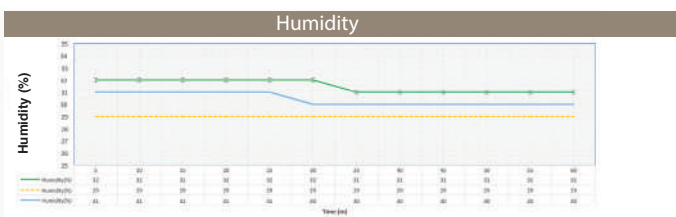
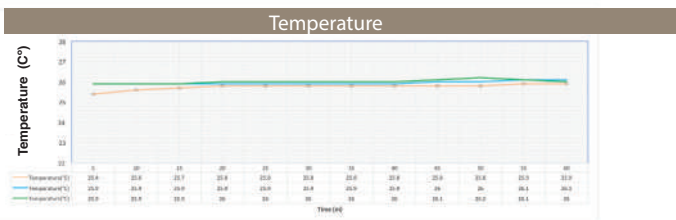
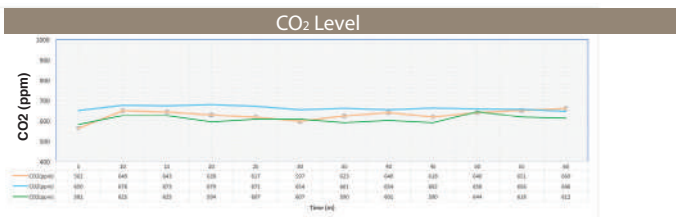
## Properties

|                     |                      |
|---------------------|----------------------|
| Inner Dimensions    | 980 x 880 x 2090 mm  |
| Packaging Dim.      | 1080 x 2280 x 720 mm |
| Door Dimensions     | 766 x 2040 mm        |
| Freepass Distance   | 742 mm               |
| Lights              | Philips 3,5 W x2     |
| Weight              | 407 Kg               |
| Installation        | 260 cm (min)         |
| Height Lux on Table | 250 Lux              |



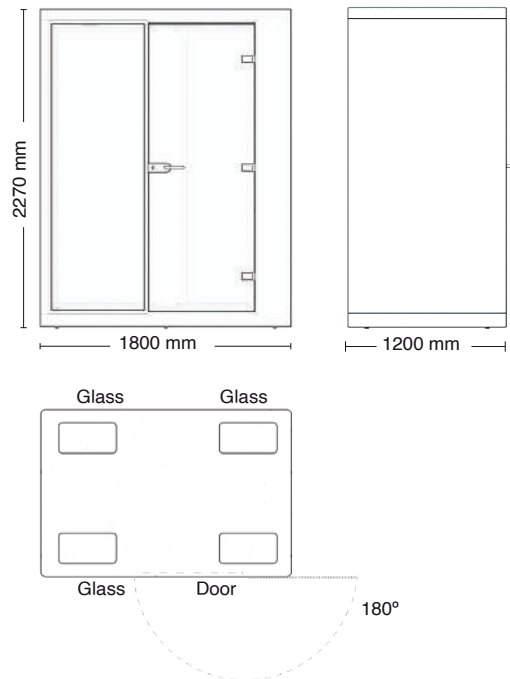
**Air Flow**

3-Units Super Silent Fans - 8,6 dB (Acoustical Noise)  
 70,8 liter/s | Total - 254,8 m3/h



**TEST CIRCUMSTANCES**

Tests conducted 60 minutes (in turns of 5 minutes phone talking and 10 minutes in silence) with 1 person. Given data is the average of tests conducted during three days.



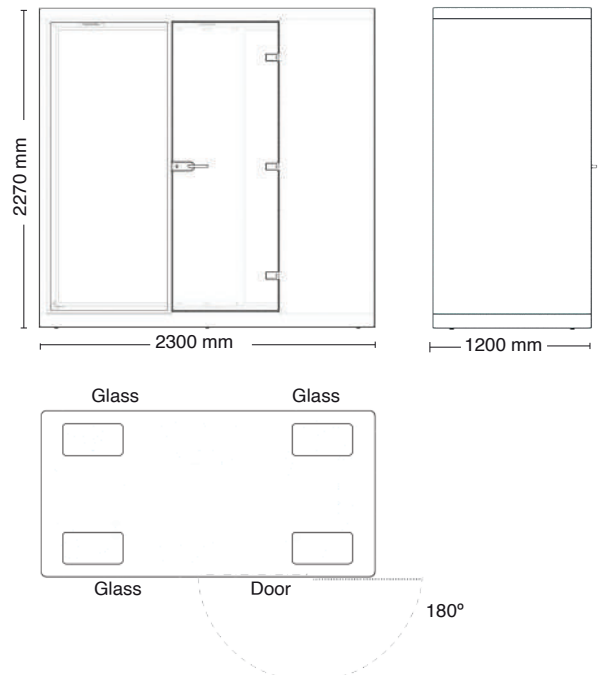
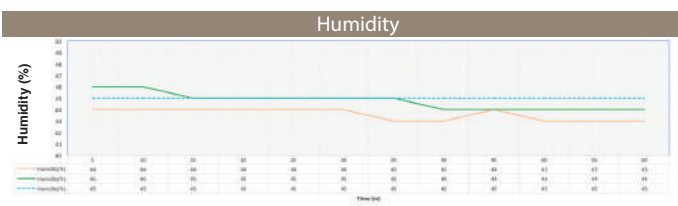
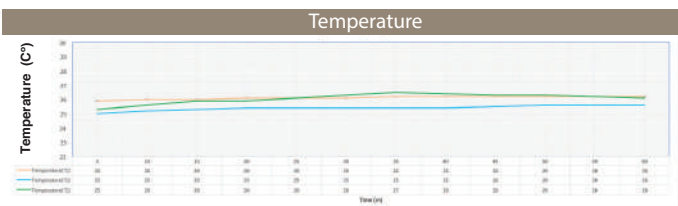
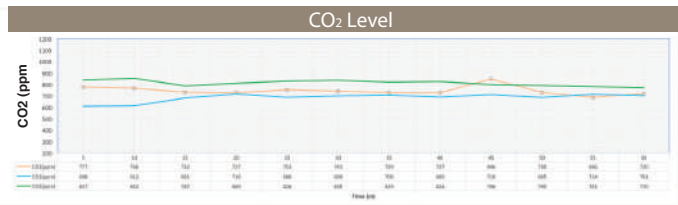
**Properties**

|                           |                       |
|---------------------------|-----------------------|
| Inner Dimensions          | 1680 x 1080 x 2090 mm |
| Packaging Dim.            | 900 x 2200 x 1280 mm  |
| Door Dimensions           | 766 x 2040 mm         |
| Freepass Distance         | 742 mm                |
| Lights                    | Philips 5,5 W x4      |
| Weight                    | 623 Kg                |
| Gross Weight Installation | 260 cm (min)          |
| Height Lux on Table       | 250-300 Lux           |



**Air Flow**

4-Units Super Silent Fans - 8,6 dB (Acoustical Noise)  
 94,4 liter/s | Total - 339,8 m3/h



**TEST CIRCUMSTANCES**

Tests conducted 60 minutes (in turns of 5 minutes phone talking and 10 minutes in silence) with 1 person. Given data is the average of tests conducted during three days.

**Properties**

|                     |                       |
|---------------------|-----------------------|
| Inner Dimensions    | 2280 x 1080 x 2090 mm |
| Packaging Dim.      | 1280 x 2380 x 1030 mm |
| Door Dimensions     | 766 x 2040 mm         |
| Freepass Distance   | 742 mm                |
| Lights              | Philips 7 W x4        |
| Weight              | 690 Kg                |
| Installation Height | 260 cm (min)          |
| Lux on Table        | 250-300 Lux           |

**Ceiling**

Laminate  
(Standard)  
&  
Natural Veneer  
Options

**Lights & Ventilation**

**Exterior**

Lacquered

**Resonators**

Felt (Standard)  
&  
Fabric Options

**Door Handle**

Dorma  
Studio Rondo  
Powder Coated  
as per  
the Exterior Color

**Hinges**

Powder Coated  
as per the Exterior Color

**Floor**

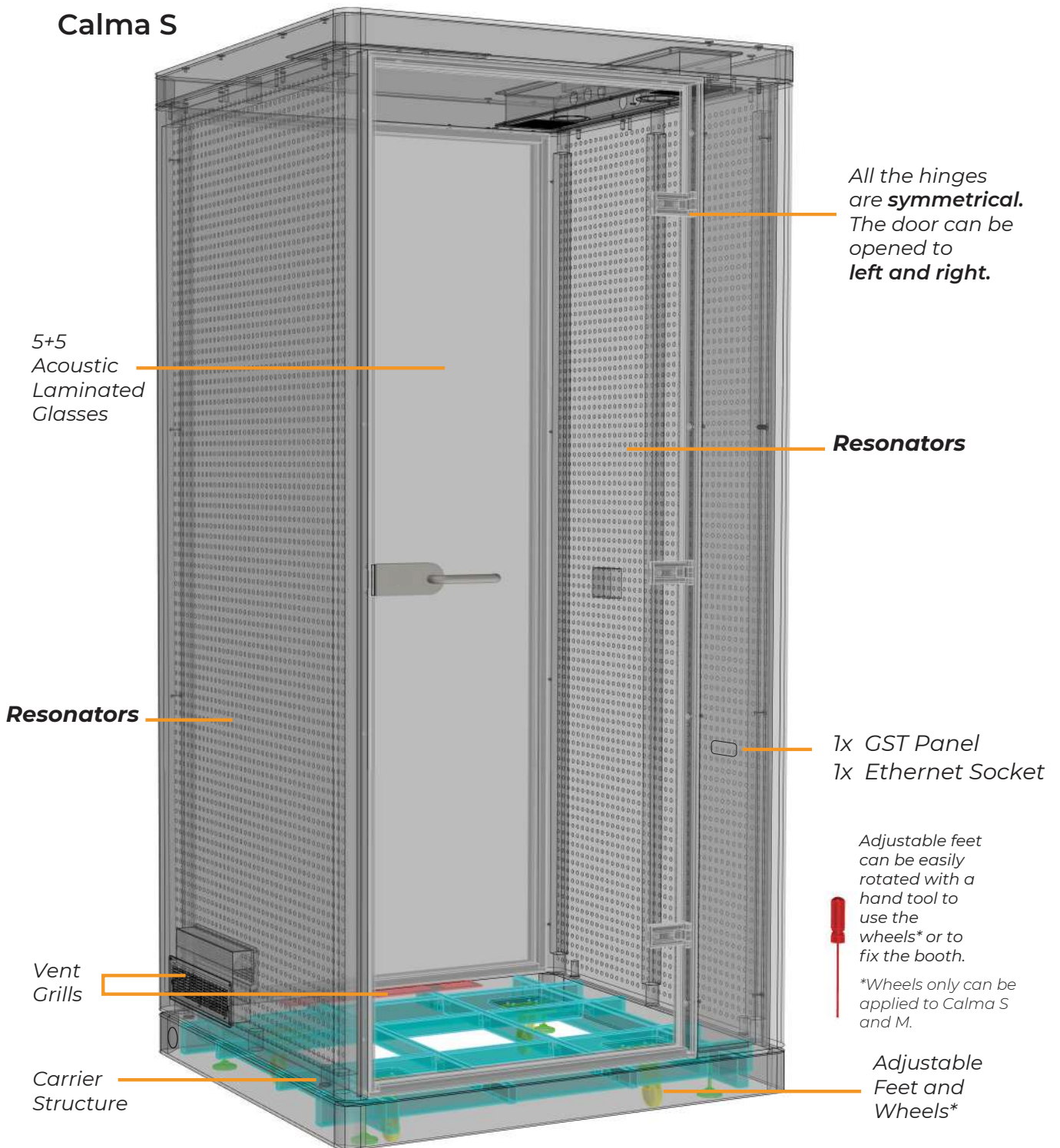
Carpet  
Color Options  
(Modulyss Step)

**Door & Window  
Aluminum  
Frames**

Powder Coated  
as per the Exterior Color



Calma S



Calma has a **IP67 rated power cabling system** which can be either installed from the bottom of the pod or the roof.

Cabling system is provided from water and fireproof TTA universal connectors.

3-Pin Male Socket



3-Pin Female Socket



F Type Euro Plug



3-Pin GST-18 Male Plug



3-Pin GST-18 Female Panel Type Socket



3-Pin IEC C-13 C14 Power Socket



STANDARDS

### Outer Colors - Lacquered



RAL9006



RAL0001



RAL9016

### Inner Colors - Felt



LIGHT GREY FLT02

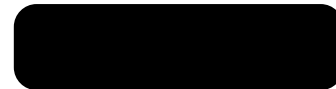


DARK GREY FLT03

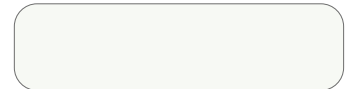
### Ceiling and Table Colors - Laminate



LIGHT GREY

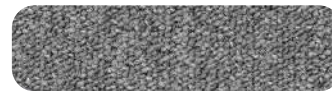


BLACK



WHITE

### Carpet Colors



MODULYSS STEP 817



MODULYSS STEP 965

OPTIONAL

### Inner Fabric Options\*

*\*Subject to extra charge.*



VOICE

FHR02



AUDIO

FHR06



CHIME

FHU10



MELODY

FHR07



SOUL

FHR13



RAP

FHU11



SONG

FHR01



POP

FHR09



ACOUSTIC

FHR12



MUSIC

FHU04



CHORUS

FHR17



LYRIC

FHU15



CLASSICAL

FHU14



VOCAL

FHU08



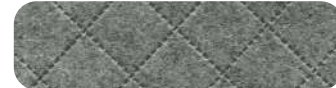
VERSE

FHR16



SCRIBE

SJR03



CARVE

SJE04

### Ceiling and Table Colors - Natural Veneer Options\* \*\*



VIN WHITE OAK



WALNUT



CHESTNUT



TEAK



VIN WALNUT

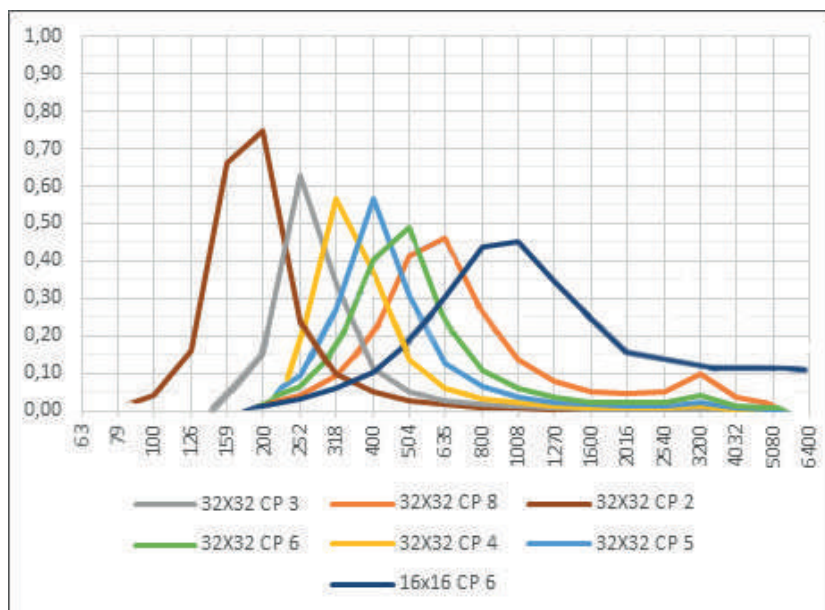


VIN SYCAMORE

*\*Subject to extra charge. Refer to price list. \*\*Tabletop and ceiling material are always the same.*



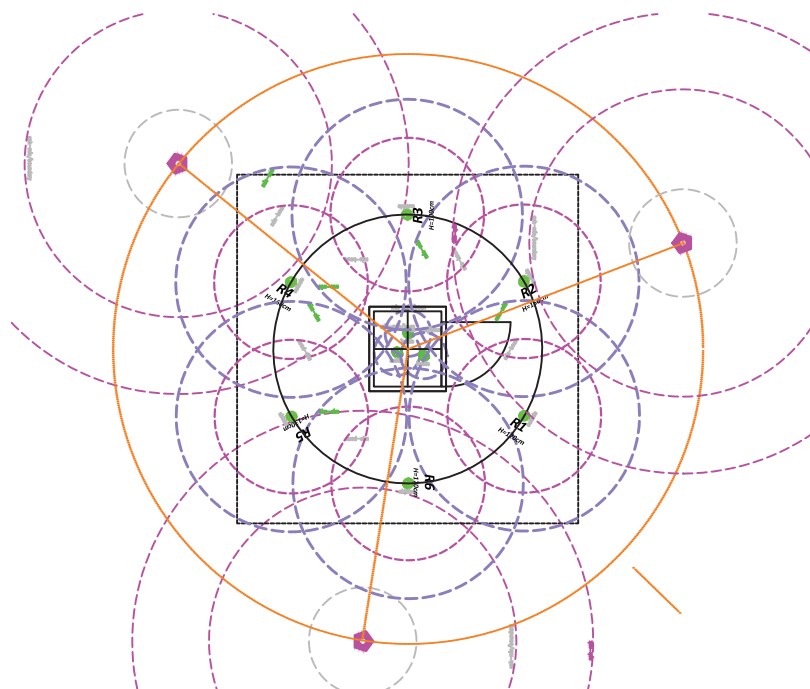
## Why are we using resonators?



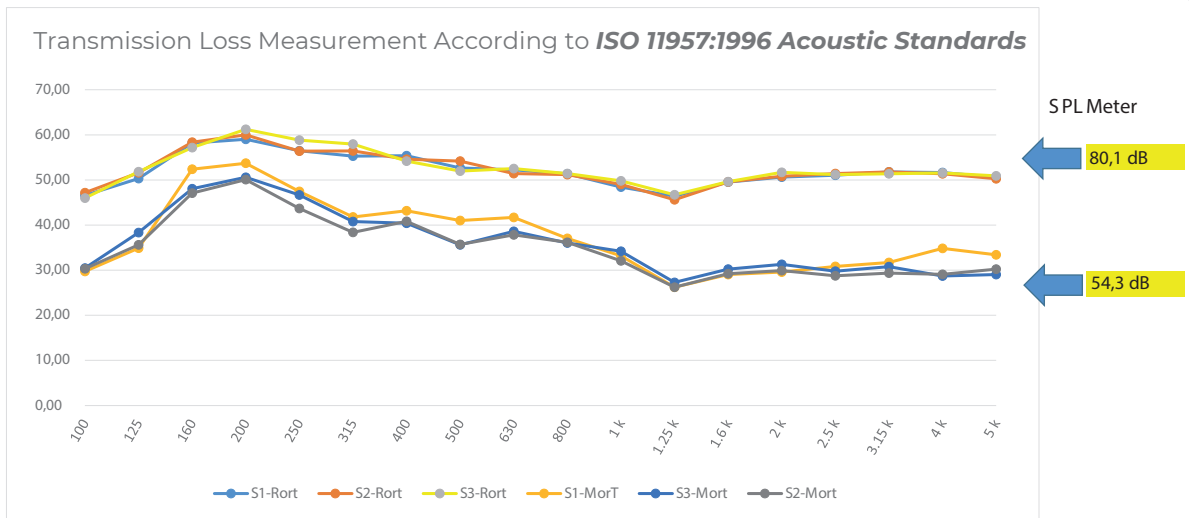
Frequency: The number of sound wave cycles per second, expressed in Hertz (Hz). The higher the number the higher the tone. Speech has a frequency between 125 - 8,000 Hz. 20 to 20,000 Hz. is the sound the human ear can hear.

## Measurement Plan

ISO 11957:1996 Acoustics - Determination of sound insulation performance of cabins - Laboratory and in situ measurements Last reviewed and confirmed in 2017

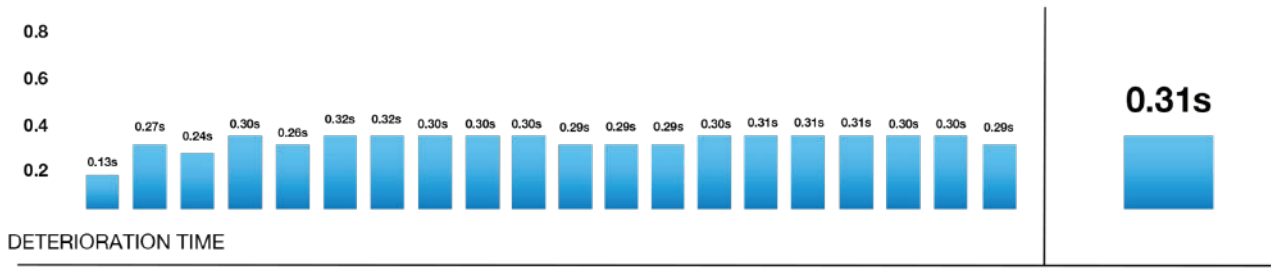


Transmission Loss Measurement According to **ISO 11957:1996 Acoustic Standards**



Name of test institute: NURUS R&D ACOUSTIC LAB  
 No. of test report:  
 Date: 5.05.2019

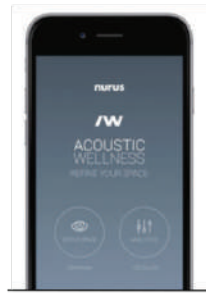
Testing Technician : Firat CEYLAN  
 Signature: *F. Ceylan*



Area Measurements

1.0 m x 1.0 m x 2.1 m

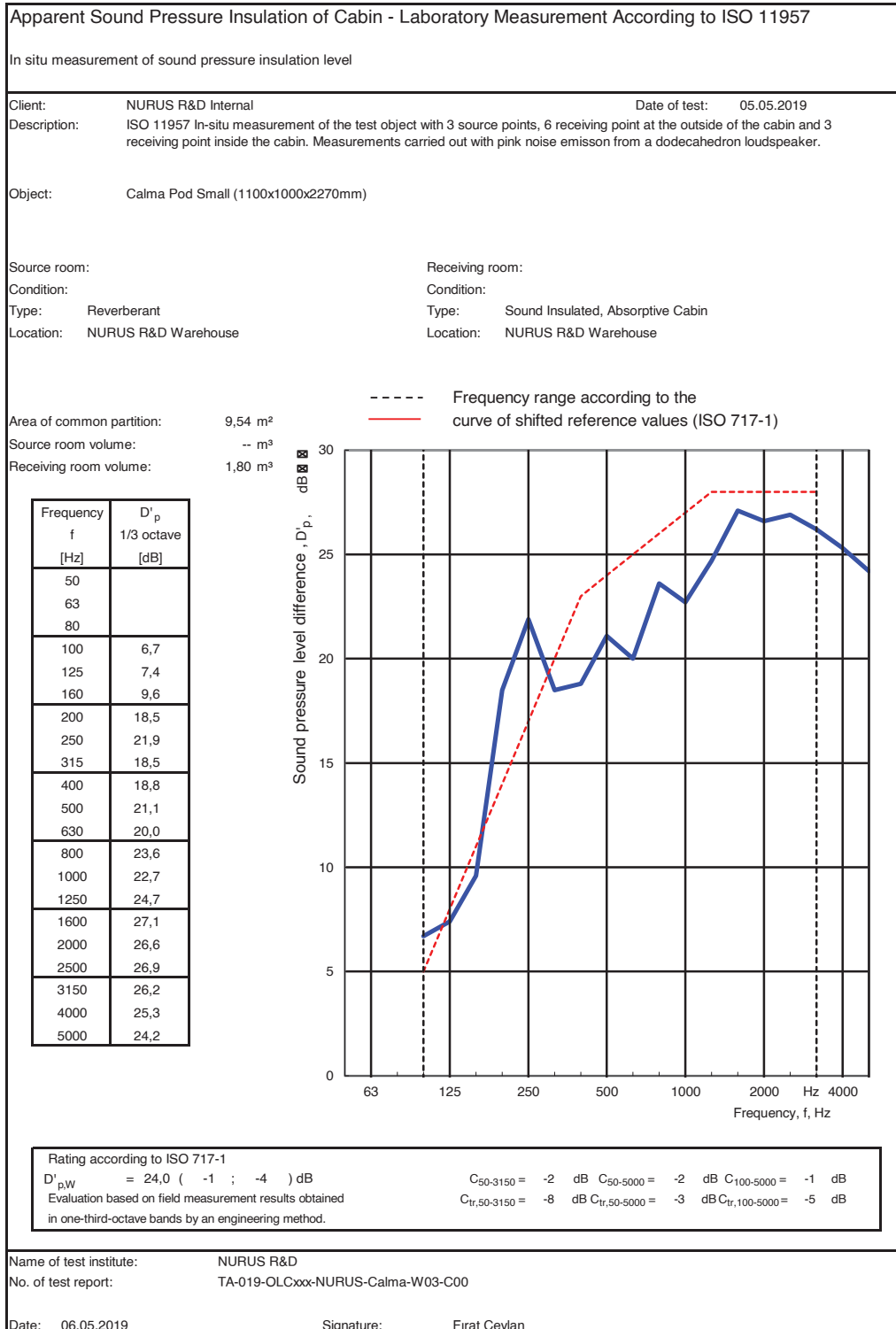
Total Area **10.4 m<sup>2</sup>**      Volume **2.1 m<sup>3</sup>**      Recommended **0.30**



## Perception of the Loudness

According to Zwicker’s loudness model\*, sound pressure can be perceived differently for each other. Experiments show that even with a linear increase of the 20 dB sound level, the loudness of the sound perceived by the human ear is four times higher.

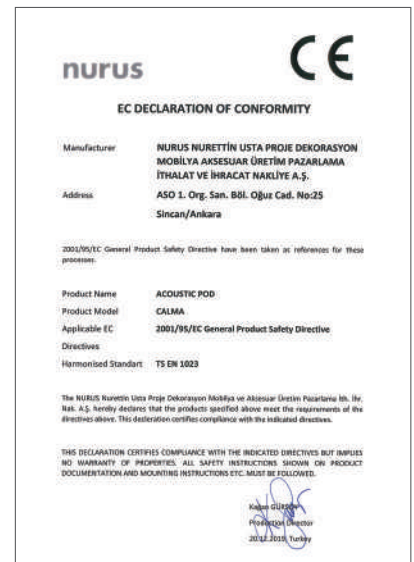
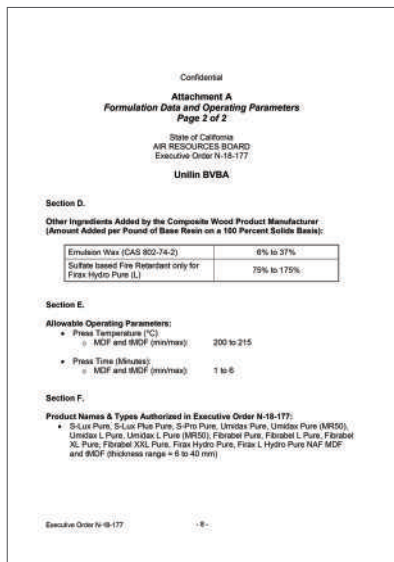
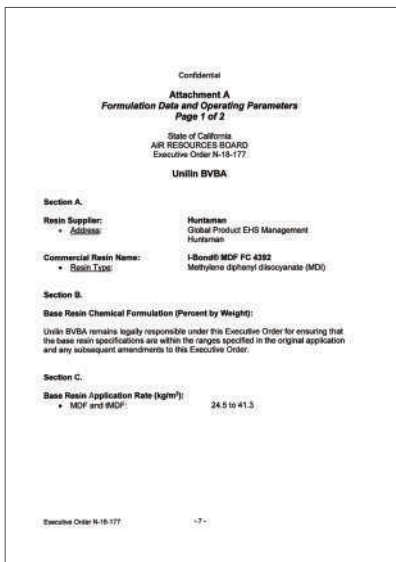
For example: When the sound level is increased with 10 dB this sounds like two times increase to the human ear. When the sound level is increased with 20 dB it sounds like four times louder to the human ear. This is due to the logarithmic increase of the sound pressure level. A sound level change over 25-30 dB may cause discomfort. For that reason, Calma Pods are tuned to 20-25 dB of noise reduction.



\* : [https://en.wikipedia.org/wiki/Eberhard\\_Zwicker](https://en.wikipedia.org/wiki/Eberhard_Zwicker)  
 \* : Zwicker,E. (1999) Psychoacoustics-Facts and Models, Springer

# Health & Environment

Calma is made out of eco-friendly materials. The outer structure of the Calma is made out of a high density MDF panel that has extremely low formaldehyde emissions and CARB and NAF certification.







Smoke Detector



Occupancy Detector



Reservation Screen

---

## Points to Consider



*Don not plug any appliances more than 220-230 VAC.*



*Make sure that Calma is not plugged in before you open the access cover on top.*



*The ventilation and lights work at the same time, when motion sensor is on.*



*Do not block the vent grill.*



*Keep the door closed at all times.*



*Do not smoke inside.*



*Keep fire away.*



INDOOR ADVANTAGE GOLD  
FURNITURE